

IECHI



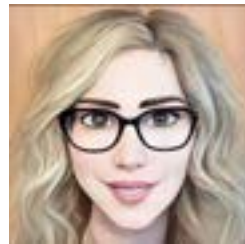
RURAL HEALTH TASK FORCE

Lets's Talk About Mountain Resident Health

WEDS. JUNE 15, 2022

2pm to 3:30pm

***Hosted
by***



Emceed by

Nichole McGivney, CCCE, CLE

Maternal Health Coordinator

The Mom & Dad Project | BVCHD

MEETING HIGHLIGHTS

- IE-CHI rural health report: mountain focus
- Current 211 MT health data
- Medi-Cal/CalAIM rural service changes and updates
- Regional mountain community discussion
- Resources for additional rural assistance

HYBRID MEETING IN PERSON AND VIRTUAL

41820 Garstin Drive, Big Bear Lake, CA 92315

OR REGISTER FOR ZOOM IN ADVANCE:

https://us02web.zoom.us/meeting/register/tZcodOmurDkpGNBMQAT_4liOvddw-oAG26G_

Questions? Contact Victoria Stephen at vmstephan@gmail.com